

8.44
8.43
8.28

7.46
7.45
7.44
7.35
7.34
7.32
7.29
7.27
7.08
7.06

4.97

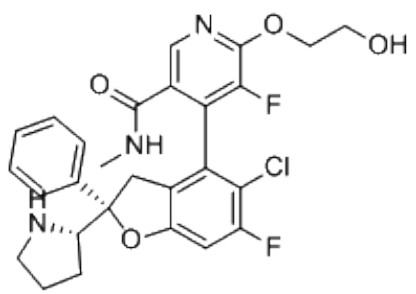
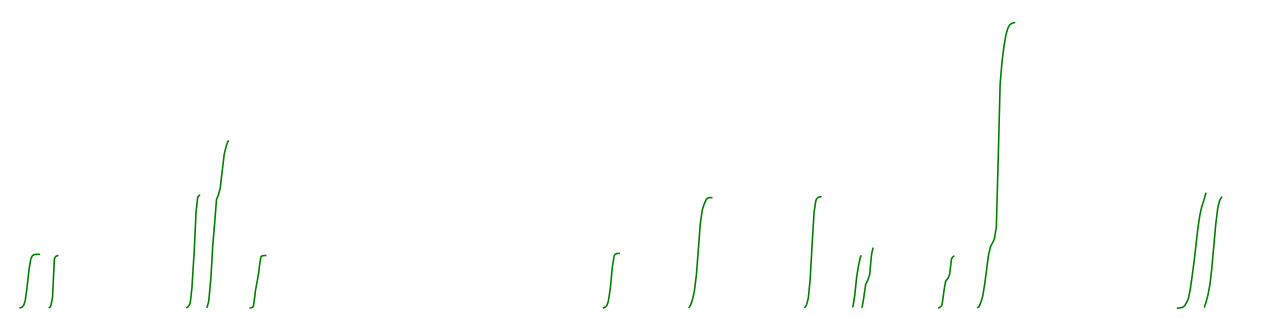
4.46
4.45
4.44

3.79
3.78
3.77
3.75

3.36

2.99
2.95
2.73
2.67
2.66
2.65
2.64
2.52
2.51
2.50
2.50

1.51
1.50
1.48
1.39
1.38
1.37



CAS: 2714434-21-4

